



ATK-25 220/12 LT

**Isolation transformer of ATK
series with a timer line**



EN

USER'S MANUAL

 **BLAUBERG**

CONTENTS

Delivery set.....	7
Brief description	7
Main technical parameters.....	7
Installation.....	8
Technical maintenance.....	10
Troubleshooting.....	10
Storage and transportation regulations.....	11
Manufacturer's warranty.....	12

This user's manual is a main operating document intended for technical, maintenance, and operating staff.

The manual contains information about purpose, technical details, operating principle, design, and installation of the ATK-25 220/12 LT unit and all its modifications.

Technical and maintenance staff must have theoretical and practical training in the field of ventilation systems and should be able to work in accordance with workplace safety rules as well as construction norms and standards applicable in the territory of the country.



**READ THE USER'S MANUAL CAREFULLY BEFORE PROCEEDING WITH INSTALLATION WORKS.
COMPLIANCE WITH THE MANUAL REQUIREMENTS ENSURES RELIABLE OPERATION AND LONG
SERVICE LIFE OF THE UNIT. KEEP THE USER'S MANUAL AVAILABLE AS LONG AS YOU USE THE UNIT.
YOU MAY NEED TO REREAD THE INFORMATION ON THE PRODUCT SERVICING.**

This unit is not intended for use by persons (including children) with reduced physical, sensory or mental capabilities, or lack of experience and knowledge, unless they have been given supervision or instruction concerning use of the unit by a person responsible for their safety.

Children should be supervised to ensure that they do not play with the unit.

This appliance can be used by children aged from 8 years and above and persons with reduced physical, sensory or mental capabilities or lack of experience and knowledge if they have been given supervision or instruction concerning use of the appliance in a safe way and understand the hazards involved.

Cleaning and user maintenance shall not be done by children without supervision.

Children shall not play with the appliance.

All operations described in this manual must be performed by qualified personnel only, properly trained and qualified to install, make electrical connections and maintain ventilation units.

Do not attempt to install the product, connect it to the mains, or perform maintenance yourself. This is unsafe and impossible without special knowledge.

Disconnect the power supply prior to any operations with the unit.

All user's manual requirements as well as the provisions of all the applicable local and national construction, electrical, and technical norms and standards must be observed when installing and operating the unit.

Disconnect the unit from the power supply prior to any connection, servicing, maintenance, and repair operations.

The product must be connected to power mains by a qualified electrician who is authorised to work alone on electrical installations with a supply voltage of up to 1000 V, after reading this user's manual. Check the unit for any visible damage of the casing.

While mounting the unit, avoid compression of the casing! Misuse of

the unit and any unauthorised modifications are not allowed.

Do not use the unit in a hazardous or explosive environment containing spirits, gasoline, insecticides, etc.

Do not close or block the unit vents in order to ensure efficient air flow.

Do not sit on the unit and do not put objects on it.

The information in this user's manual was correct at the time of the document's preparation. The Company reserves the right to modify the technical characteristics, design, or configuration of its products at any time in order to incorporate the latest technological developments.

Do not touch the unit with wet or damp hands;

Do not touch the unit when barefoot.

BEFORE INSTALLING ADDITIONAL EXTERNAL DEVICES, READ TO THE APPROPRIATE USER MANUALS.

Connection to the mains must be made through a disconnecting device, which is integrated into the fixed wiring system in accordance with the wiring rules for design of electrical units, and has a contact separation in all poles that allows for full disconnection under overvoltage category III conditions.

The power cord must be routed in fixed wiring according to the regulations of the country of operation.



**THE PRODUCT MUST BE DISPOSED SEPARATELY AT THE END OF ITS SERVICE LIFE.
DO NOT DISPOSE THE UNIT AS UNSORTED DOMESTIC WASTE.**

DELIVERY SET

Transformer	- 1 pc.
Screws with dowels	- 2 pcs.
User's manual	- 1 pc.
Packing box	- 1 pc.

BRIEF DESCRIPTION

The product is an isolation transformer ATK-25 220/12 LT designed to supply safe ~ 12 V power to domestic fans equipped with a timer line that consume less than 24 W.

MAIN TECHNICAL PARAMETERS

The product is rated for connection to single-phase AC 220...240 V / 50 Hz power mains.

The output voltage is 12 V 50 Hz.

The maximum load current is 2 A.

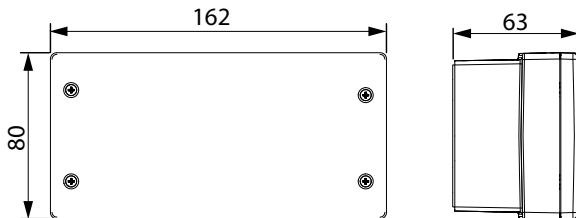
The product is rated for operation at the ambient temperature ranging from $+1$ °C up to $+55$ °C.

The unit is rated as a Class II electrical appliance.

Ingress protection rating against access to hazardous parts and water ingress is IP30.

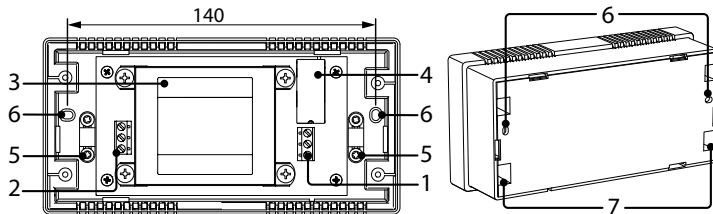
The product is rated for continuous operation.

The figures below show the overall dimensions of the product.



The figure demonstrates the internal design and fixing holes of the unit

- 1 – input terminal block;
- 2 – output terminal block;
- 3 – isolation transformer;
- 4 – intermediate relay;
- 5 – wire clamps;
- 6 – fixing holes;
- 7 – holes for routing the input and output cables.

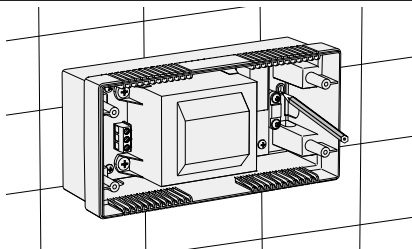
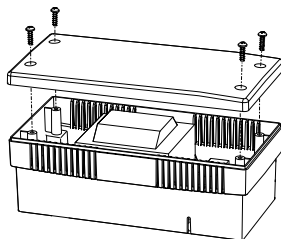


INSTALLATION

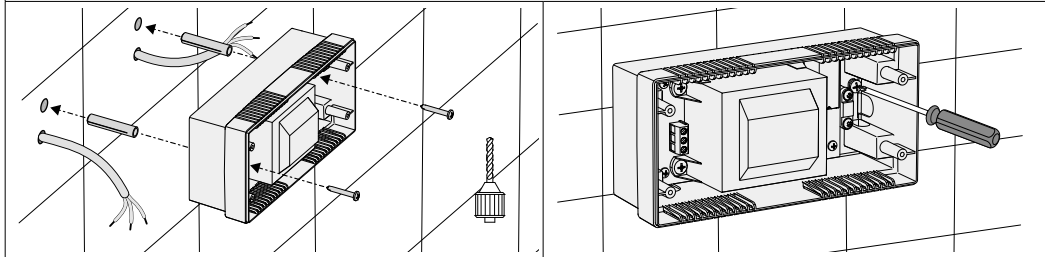
The product must be installed in a location that is not exposed to high humidity and is inaccessible to a person using a bath or shower. The product must not be installed near heaters or other heat sources.

The product must be connected to power mains using an insulated cable through an automatic circuit breaker integrated into the fixed wiring system. The gap between the circuit breaker contacts on all poles must be not less than 3 mm. The tripping current of the circuit breaker and the wire cross-section are selected based on the electrical characteristics shown on the label of the product casing.

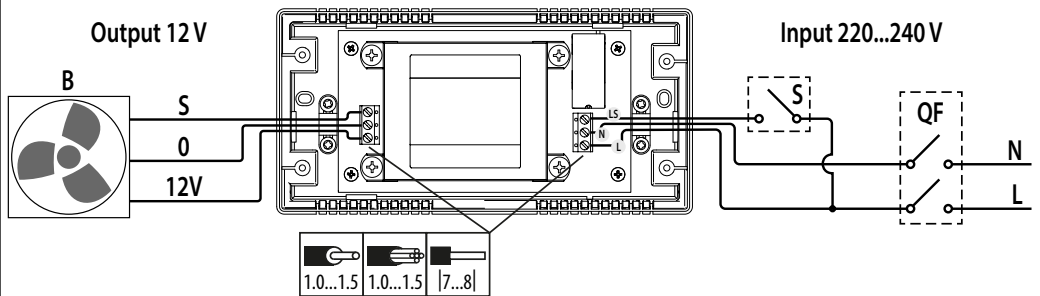
The unit is designed for wall mounting and is secured with the supplied screws and dowels.



If the wiring is concealed, route the cables out of the wall at the locations opposite the corresponding holes in the product's casing.



Follow the diagram in the figure below to connect the product to the power mains.
Do not connect multiple fans to the product.



QF – external circuit breaker integrated into the fixed wiring;

S – external switch

B – fan with a supply voltage of 12 V with a timer line.

TECHNICAL MAINTENANCE

Disconnect the product from the power supply and take measures to prevent the power from being turned on unintentionally until the maintenance is complete.

Maintenance works should be carried out at least once every 6 months, depending on the operating conditions.

The maintenance includes dusting and cleaning the surfaces, as well as checking whether the electric connections are reliable.

When carrying out maintenance, follow the safety regulations in force in the country.

ATTENTION! Do not allow water or liquid come into contact with electric components!

TROUBLESHOOTING

The product starts operating immediately upon the supply voltage being applied to its input. If the device is not working, use the table below for troubleshooting.

Problem	Possible reasons	Troubleshooting
The fan that is connected to the transformer is not working.	No voltage in the power mains.	Check for voltage in the power mains. If it is absent, take measures to restore the power mains' function.
	The electrical contact in the transformer or fan terminal clamps is disrupted.	Restore the electrical connections in the transformer or fan terminal clamps.
	A thermal fuse has tripped at the transformer output due to an overload or short circuit.	Resolve the cause of the transformer overload or short circuit at its output. Resume operation of the product after the thermal fuse has cooled down.
	Fan malfunction.	Repair or replace the fan.

STORAGE AND TRANSPORTATION REGULATIONS

- Store the unit in the manufacturer's original packaging box in a dry closed ventilated premise with temperature range from +5 °C to + 40 °C and relative humidity up to 70 %.
- Storage environment must not contain aggressive vapors and chemical mixtures provoking corrosion, insulation, and sealing deformation.
- Use suitable hoist machinery for handling and storage operations to prevent possible damage to the unit.
- Follow the handling requirements applicable for the particular type of cargo.
- The unit can be carried in the original packaging by any mode of transport provided proper protection against precipitation and mechanical damage. The unit must be transported only in the working position.
- Avoid sharp blows, scratches, or rough handling during loading and unloading.
- Prior to the initial power-up after transportation at low temperatures, allow the unit to warm up at operating temperature for at least 3-4 hours.

MANUFACTURER'S WARRANTY

The product is in compliance with EU norms and standards on low voltage guidelines and electromagnetic compatibility. We hereby declare that the product complies with the provisions of Electromagnetic Compatibility (EMC) Directive 2014/30/EU of the European Parliament and of the Council, Low Voltage Directive (LVD) 2014/35/EU of the European Parliament and of the Council and CE-marking Council Directive 93/68/EEC. This certificate is issued following test carried out on samples of the product referred to above.

The manufacturer hereby warrants normal operation of the unit for 24 months after the retail sale date provided the user's observance of the transportation, storage, installation, and operation regulations. Should any malfunctions occur in the course of the unit operation through the Manufacturer's fault during the guaranteed period of operation, the user is entitled to get all the faults eliminated by the manufacturer by means of warranty repair at the factory free of charge. The warranty repair includes work specific to elimination of faults in the unit operation to ensure its intended use by the user within the guaranteed period of operation. The faults are eliminated by means of replacement or repair of the unit components or a specific part of such unit component.

The warranty repair does not include:

- routine technical maintenance
- unit installation/dismantling
- unit setup

To benefit from warranty repair, the user must provide the unit, the user's manual with the purchase date stamp, and the payment paperwork certifying the purchase. The unit model must comply with the one stated in the user's manual. Contact the Seller for warranty service.

The manufacturer's warranty does not apply to the following cases:

- User's failure to submit the unit with the entire delivery package as stated in the user's manual including submission with missing component parts previously dismantled by the user.
- Mismatch of the unit model and the brand name with the information stated on the unit packaging and in the user's manual.
- User's failure to ensure timely technical maintenance of the unit.
- External damage to the unit casing (excluding external modifications as required for installation) and internal components caused by the user.
- Redesign or engineering changes to the unit.

- Replacement and use of any assemblies, parts and components not approved by the manufacturer.
- Unit misuse.
- Violation of the unit installation regulations by the user.
- Violation of the unit control regulations by the user.
- Unit connection to power mains with a voltage different from the one stated in the user's manual.
- Unit breakdown due to voltage surges in power mains.
- Discretionary repair of the unit by the user.
- Unit repair by any persons without the manufacturer's authorization.
- Expiration of the unit warranty period.
- Violation of the unit transportation regulations by the user.
- Violation of the unit storage regulations by the user.
- Wrongful actions against the unit committed by third parties.
- Unit breakdown due to circumstances of insuperable force (fire, flood, earthquake, war, hostilities of any kind, blockades).
- Missing seals if provided by the user's manual.
- Failure to submit the user's manual with the unit purchase date stamp.
- Missing payment paperwork certifying the unit purchase.

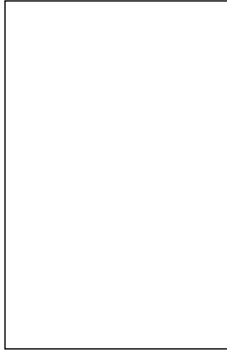


FOLLOWING THE REGULATIONS STIPULATED HEREIN WILL ENSURE A LONG AND TROUBLE-FREE OPERATION OF THE UNIT

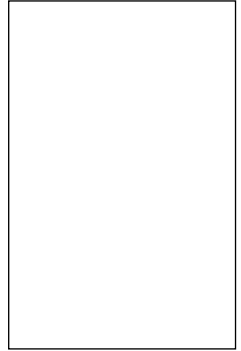


USER'S WARRANTY CLAIMS SHALL BE SUBJECT TO REVIEW ONLY UPON PRESENTATION OF THE UNIT, THE PAYMENT DOCUMENT AND THE USER'S MANUAL WITH THE PURCHASE DATE STAMP

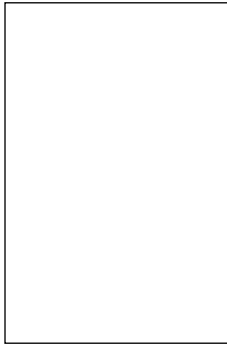
Approval mark

A large, empty rectangular box with a thin black border, intended for an approval mark.

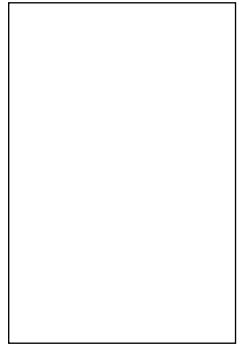
Sold by
(name and stamp of the seller)

A large, empty rectangular box with a thin black border, intended for the name and stamp of the seller.

Manufacture Date

A large, empty rectangular box with a thin black border, intended for the manufacture date.

Date of sale

A large, empty rectangular box with a thin black border, intended for the date of sale.



www.blaubeergventilatoren.de
B289EN-01