

DECOR G

PLASTIC GRAVITY GRILLES

Features

- o Outer wall mounting
- o Decoration of ventilation shaft vents or for connection to round air ducts
- o Equipped with gravity louvre shutters for back flow prevention
- o Temperature- and UV-resistant antistatic plastic
- o Flush mounted fasteners
- o Easy maintenance



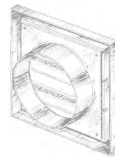
Options

| Model | Basic Model | Spigot |
|--------------------|-------------|--------|
| Decor 155x155G | • | |
| Decor 155x155/UG | | • |
| Decor 185x185G | • | |
| Decor 185x185/125G | | • |
| Decor 250x250G | • | |
| Decor 250x250/150G | | • |

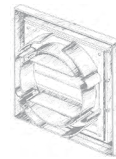
Without spigot



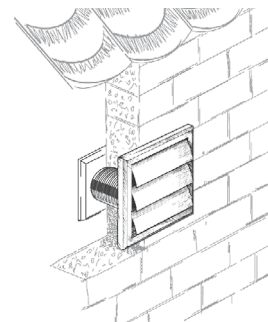
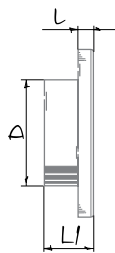
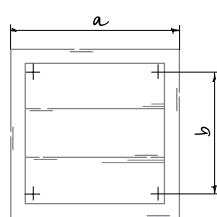
Non-adjustable spigot
Ø125 mm, Ø150 mm



Universal spigot
Ø100 mm, Ø125 mm, 55 × 110 mm



Overall dimensions and mounting



| Model | Dimensions [mm] | | | | | Ø D | Air pass [m²] |
|--------------------|-----------------|-----|----|----|--------------------|--------------|---------------|
| | a | b | l | L1 | | | |
| Decor 155x155G | 154 | 110 | 15 | — | — | 0.0096 | |
| Decor 155x155/UG | 154 | 110 | 15 | 45 | 100, 125, 55 × 110 | 0.0096 | |
| Decor 185x185G | 186 | 142 | 15 | — | — | 0.016 | |
| Decor 185x185/125G | 186 | 142 | 15 | 45 | 125 | 0.0113 | |
| Decor 250x250G | 250 | 214 | 15 | — | — | 0.0177-0.056 | |
| Decor 250x250/150G | 250 | 214 | 15 | 41 | 150 | 0.0177-0.056 | |