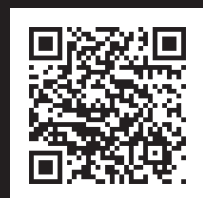


SENSOR SPEED SWITCH



SGR-3/1



EN

OPERATION MANUAL

BLAUBERG Ventilatoren GmbH is happy to offer your attention the sensor speed switch SGR-3/1.

INTRODUCTION

The present operation manual contains technical description, technical data sheets, operation and mounting guidelines, safety precautions and warnings for safe and correct operation of the speed switch. Read carefully the operation manual, especially the safety requirements before mounting and start-up of the device. Keep the operation manual available as long as you use the device.

GENERAL

The sensor speed switch SGR-3/1 is designed for switching on/off and speed switching of multi-speed ventilation units and domestic fans. The speed switch is equipped with a sensor panel with three buttons for speed selection.

SAFETY RULES

The speed switch complies with the requirements according to the EU norms and directives, to the relevant EU-Low Voltage Equipment Directives, EU-Directives on Electromagnetic Compatibility. Cut off power supply to the speed switch prior to any operations. All mounting and maintenance operations must be carried out by duly qualified electricians with a valid electrical work permit for electric operations after careful study of the present user's manual. Misuse of the speed switch or any unauthorized modification are not allowed. Follow the manual guidelines to ensure trouble-free operation and long service life of the speed switch.

STORAGE AND TRANSPORTATION RULES

Transportation is allowed by any vehicle provided the speed switch is transported in the original package and is protected against weather and mechanical damages.

Store the delivered speed switch in the manufacturer's original packing box in a dry ventilated premise. The storage environment must not be subjected to any aggressive and/or chemical evaporations, admixtures, foreign objects that may provoke corrosion and damage connection tightness. Store the speed switch in an environment with minimized risk of mechanical damages, temperature and humidity fluctuations. Store the delivered speed switch at the ambient temperature from +5 °C up to + 40 °C.

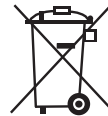
MANUFACTURER'S WARRANTY

The speed switch complies with the requirements according to the EU norms and directives, to the relevant EU-Low Voltage Equipment Directives, EU-Directives on Electromagnetic Compatibility. We hereby declare that the following product complies with the essential protection requirements of Electromagnetic Council Directive 2004/108/EC, 89/336/EEC and Low Voltage Directive 2006/95/EC, 73/23/EEC and CE-marking Directive 93/68/EEC on the approximation of the laws of the Member States relating to electromagnetic compatibility. The manufacturer hereby warrants normal operation of the speed switch over the period of 1 year from the retail sale date provided observance of the installation and operation regulations. In case of failure due to manufacturing fault during the warranty period the consumer has the right for the speed switch repair or exchange. The replacement is offered by the Seller. If case of no confirmation of the sale date, the warranty period shall be calculated from the manufacturing date. The manufacturer shall not be liable for any damage resulting from any speed switch misuse of or gross mechanical interference with the speed switch. The manufacturer is not responsible for the damages resulted due to the use of third party equipment or to third party equipment.



WARNING

The speed switch is not allowed for use by children and persons with reduced physical, mental or sensory capacities, without proper practical experience or expertise, unless they are controlled or instructed on the product operation by the person(s) responsible for their safety. Supervise the children and do not let them play with the product.



WARNING

Do not dispose in domestic waste. The product contains in part material that can be recycled and in part substances that should not end up as domestic waste. Dispose of the product once it has reached the end of its working life according to the regulations valid in your country.

DELIVERY SET

- ✓ Sensor speed switch SGR-3/1;
- ✓ Operation manual;
- ✓ Packing box;
- ✓ Fasteners.

TECHNICAL DATA

Table 1. Technical data

Model	Parameters							
	Voltage, 50–60 Hz [V]	Max. current load [A]	Cable cross section [mm ²]	Operating temperature range [°C]	Operating humidity range [%]	Service life	Ingress Protection Rating	Weight [g]
SGR-3/1	110–240	1	0.35 - 1	from -10 up to +45	from 5 up to 80 (no condensate)	100 000 operations	IP30	138

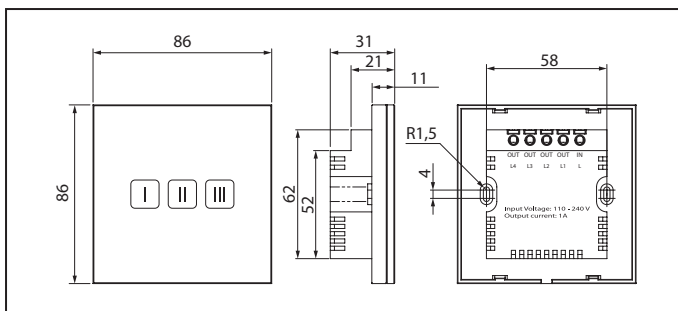


Fig. 1. Overall dimensions

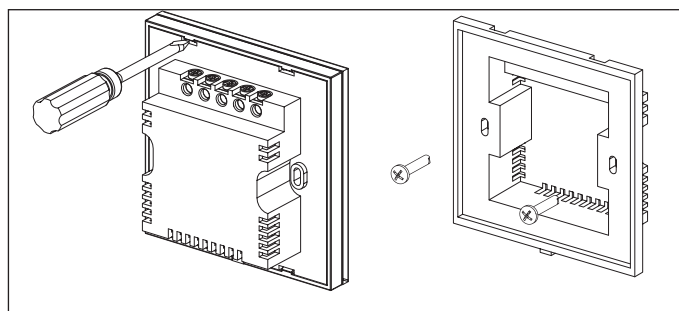


Fig. 2. SGR-3/1 Speed switch mounting

MOUNTING



WARNING

Make sure that the speed switch is not damaged. Do not use a damaged switch! Do not install the switch on an uneven surface! While tightening the screws avoid overtightening not to damage the device.

Mounting sequence of the sensor speed switch, fig. 3: Unfasten gently the front panel latches of the switch. Remove the front panel. Route the cable in the wall to the panel mounting place. Attach the back panel to the wall through the fastening openings. Install the front panel on the latches.

CONNECTION TO POWER MAINS



WARNING

Cut off power supply to the speed switch prior to any operations with the speed switch. All mounting and servicing operations are allowed for duly qualified electricians with valid electrical work permit for electric operations after careful study of the present user's manual.

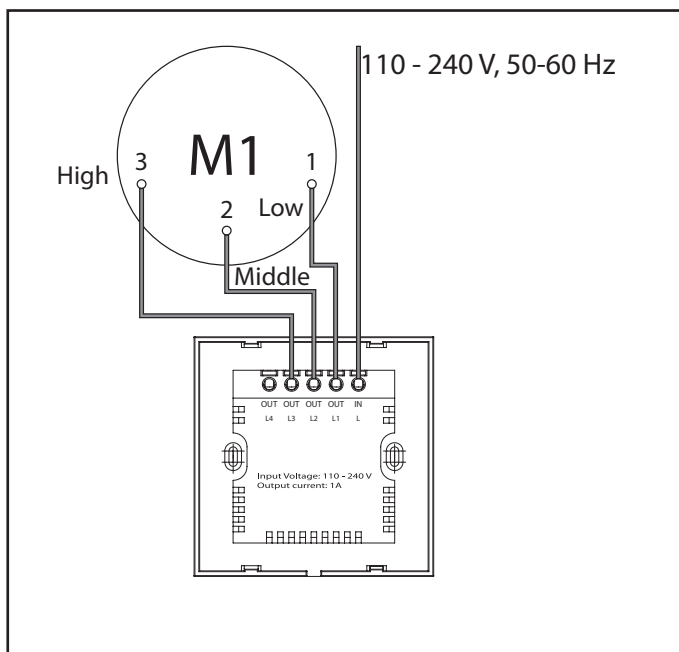





Fig. 3. Wiring diagram

For connection of the speed switch to ventilation units follow the wiring diagram, fig. 3.

CONTROL

To activate the required speed of the connected ventilation equipment, touch the button with a respective speed marking, fig. 4:

-  - 1 speed;
-  - 2 speed;
-  - 3 speed;

For speed switching, touch a button with respective speed indication. To turn the product off touch the respective current fan speed button again. The respective current speed button glows blue.

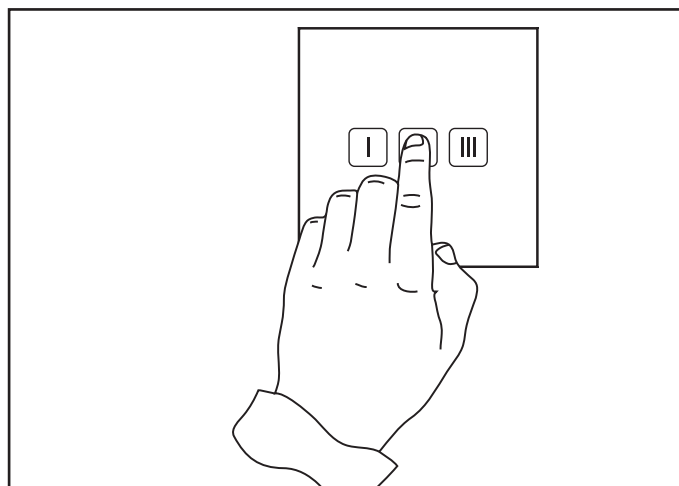


Fig. 4. Speed switch control

ACCEPTANCE CERTIFICATE

The sensor speed switch

SGR-3/1

is recognized as serviceable.

The speed switch complies with the requirements according to the EU norms and directives, to the relevant EU-Low Voltage Equipment Directives, EU-Directives on Electromagnetic Compatibility.

We hereby declare that the following product complies with the essential protection requirements of Electromagnetic Council Directive 2004/108/EC, 89/336/EEC and Low Voltage Directive 2006/95/EC, 73/23/EEC and CE-marking Directive 93/68/EEC on the approximation of the laws of the Member States relating to electromagnetic compatibility.

This certificate is issued following test carried out on samples of the product referred to above.

Approval mark

Manufacturing date _____

WARRANTY CARD

SGR-3/1

SELLER

SALES DATE

REPRESENTATIVE IN EU

BLAUBERG Ventilatoren GmbH
Aidenbachstr. 52
D-81379 Munich, Germany

