

SLIM

CLASSIC MODELS

Features



- Specially designed for extract ventilation
- Wall and ceiling mounting
- Easy installation and maintenance
- Continuous operation
- Backdraft damper
- Ball bearing motor



Air flow:
up to 305 m³/h
85 l/s



Power:
from 14 W
SFP:
from 0.28 W/l/s



Noise level:
from 33 dBA



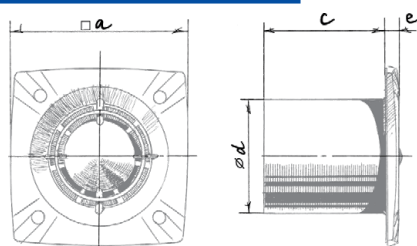
Options



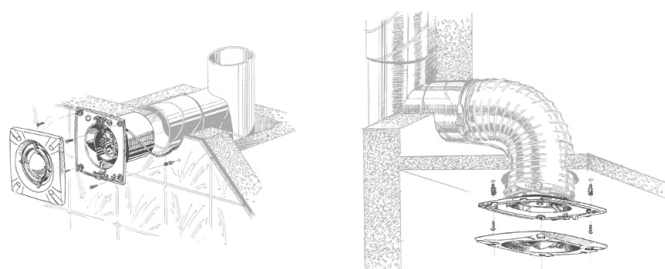
Model	Slim 100/120/125/150				
Option	S	T	ST	H	SH
Pull-cord switch	•		•		•
Timer		•	•	•	•
Humidity sensor				•	•

- Turn-off delay adjustable from 2 to 30 min.
- Humidity setpoint adjustable from 60 % up to 90 %.

Overall dimensions and mounting



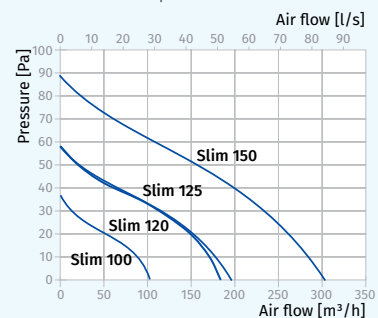
Dimensions [mm]	a	c	∅ d	e
Slim 100	150	87	100	13
Slim 120	176	94	117	13
Slim 125	176	101	125	13
Slim 150	205	118	150	13



Technical data

	Slim 100	Slim 120	Slim 125	Slim 150
Voltage [V/Hz]	220-240/50	220-240/50	220-240/50	220-240/50
Power [W]	14	17	16	24
Current [A]	0.085	0.1	0.1	0.13
RPM [min ⁻¹]	2300	2400	2400	2400
Maximum air capacity [m ³ /h (l/s)]	105 (29)	184 (51)	190 (53)	305 (85)
SFP [W/l/s]	0.48	0.33	0.30	0.28
Sound pressure level [dBA]*	33	35	34	37
Weight [kg]	0.6	0.73	0.73	0.92

* Sound pressure level measured in free space at a distance of 3 meters from the fan.



Designation key

Slim	100	SH
Model	Spigot diameter	Option

Accessories

Duct system	Flexible air ducts	Grilles and hoods	Speed controllers	Clamps
				
BlauPlast	BlauFlex	Decor, GM	CDT E1.8 MCD 60/0.3	K, KZ